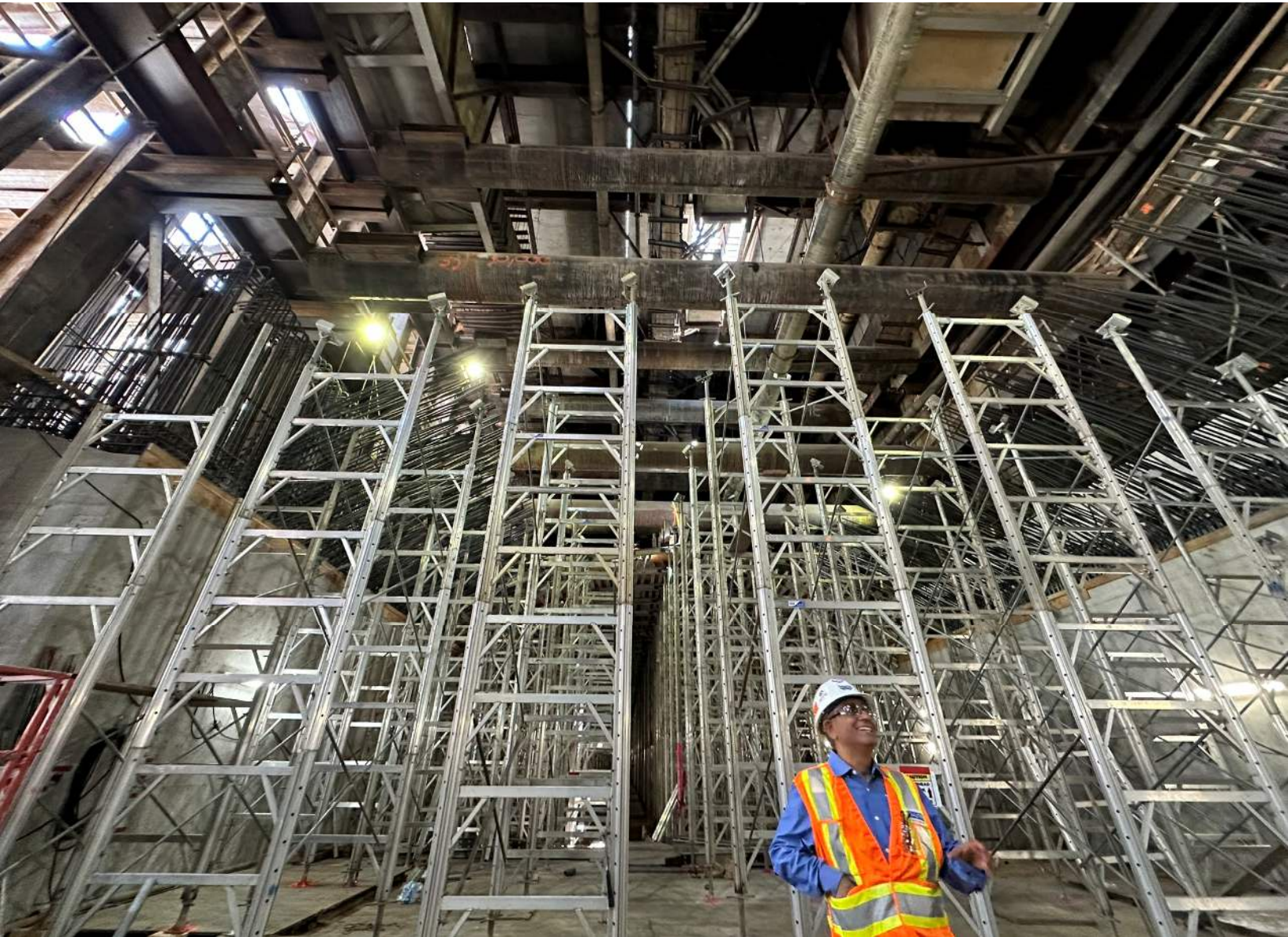


Systems : Solutions : Advantages since 1952



HI-LITE

ALUMIUM SHORING SYSTEMS



About **HI-LITE** Systems

Aluminum stands at the forefront of concrete forming and shoring products today, where Hi-Lite was one of the initial innovators.

Founded in 1952 as Jackson Scaffolding, **HI-LITE** revolutionized the industry in 1974 by designing the first aluminum shoring system. This breakthrough earned the trust of project managers across North America and Europe.

Today, **HI-LITE**'s aluminum innovations are utilized in over thirty countries worldwide.

Experience the **HI-LITE** Advantage.

HI-LITE is Aluminum . . .

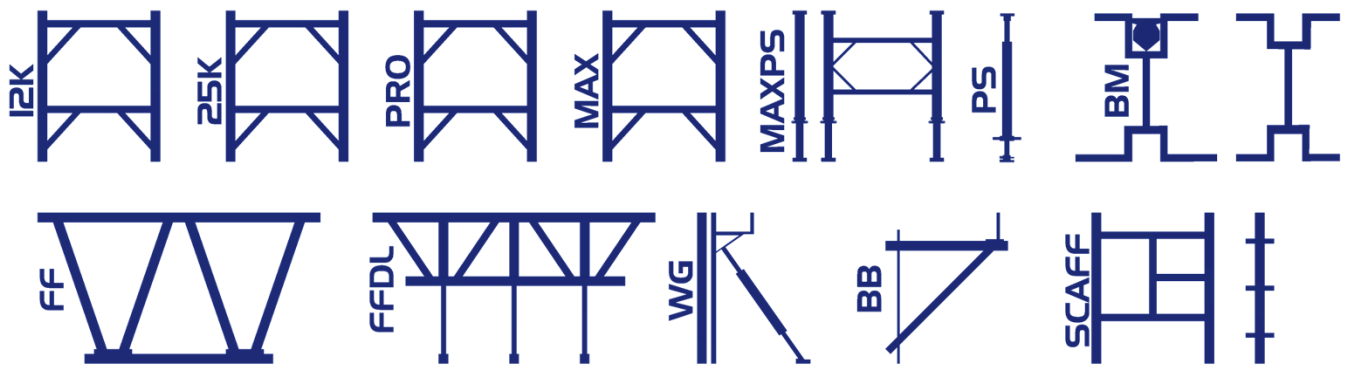


. . Aluminum Is **Green.**



HI-LITE Engineers Help Make Your Project a Success

Our products can be used wherever concrete is poured in place. If your project has special requirements, HI-LITE can deliver custom solutions that take advantage of our knowledge, product line and custom manufacturing capabilities as we are a full-service company.



- Layout CAD Drawings & Engineering Calculations
- Equipment Testing and Test Reports
- Jobsite Services
- Equipment Estimation
- Successful Cooperation with Contractors



HI-LITE OFFERS

➤ **RENTALS**

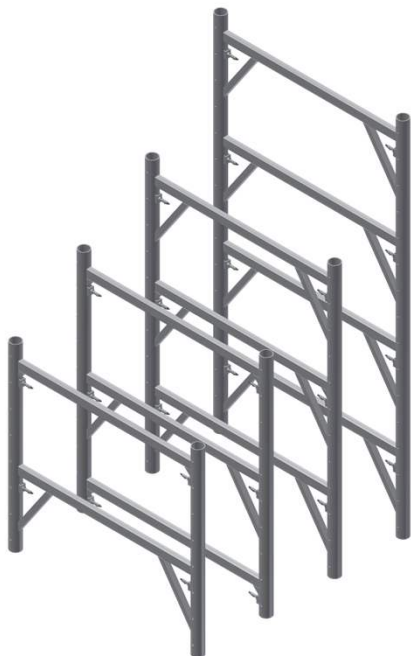
➤ **SALES**



➤ **BUY-BACK**

For longer term projects, Hi-Lite recommends that our customers buy, and at the end of the project, we will buy back. This reduces the rental budgets on longer term rentals.

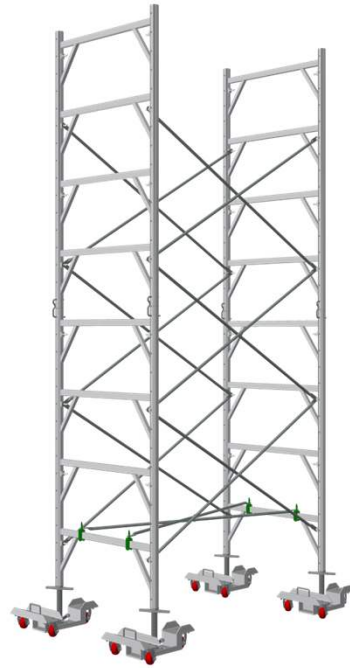
12K Aluminum Shoring Frames



The HI-LITE 12K aluminum shoring frame system has a capacity of up to 53.4 Kn (12,000 lb.) per leg using a safety factor of 2.5.

A 6hx4w Frame weights only 31 lbs. compared to a steel frame at over 70 lbs.

- High Durability
- Highly versatile
- Low maintenance & handling costs
- Available (hxw) 4x4, 5x4, 6x4, 8x4



To see more details visit our website at: www.hi-lite-systems.com/systems/concrete-shoring/12k-aluminum-shoringframe



Contact us for engineering data including maximum loads for strength to weight ratios, load capacities, quality control specifications and other technical data.

Made famous on the Boston Big Dig. Heavy Civil Shoring.

25K Aluminum Modular Shoring Frames



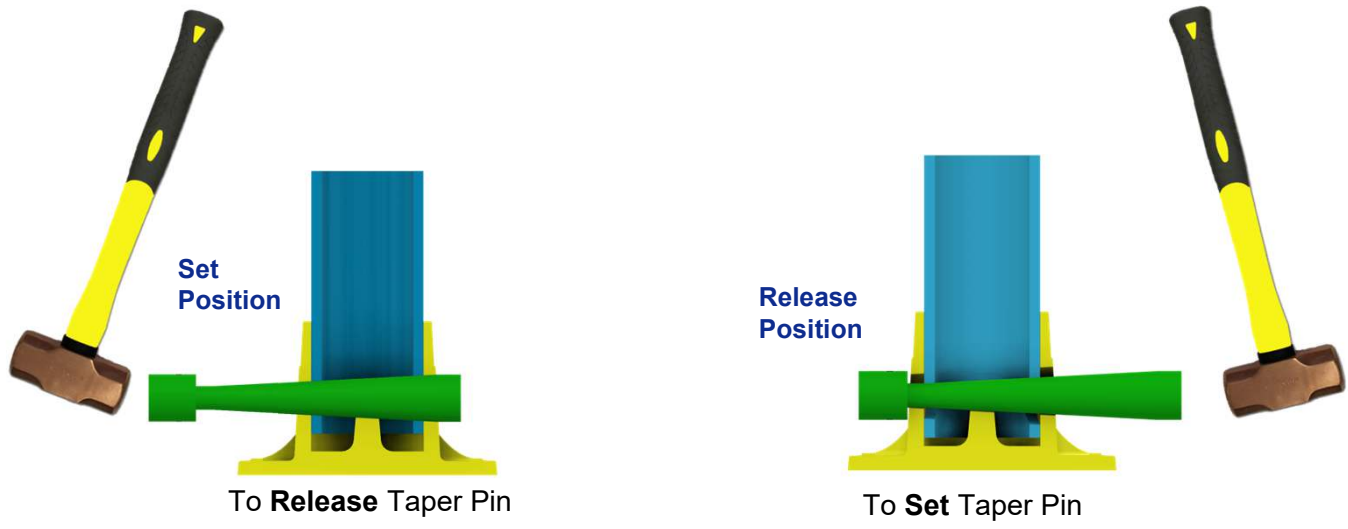
25k - Up To 111.2kn (25,000lbs) Swl 2.5:1 Per Leg

A 6hx4w Frame weights only 67 lbs. compared to a steel frame at over 70 lbs. and a leg capacity of only 10Kip !



- **Strong And Durable**
- **Maximum Versatility**
- **Economical**
- **Safe And Efficient**
- **Available (hxw) 4x4, 5x4, 6x4, 8x4**

SJ60-TP 2.36" (60mm) SJ c/w Fixed TP Base Plate



When 25K Shoring Towers or 25K Post Shores are to be striped, use a Heavy Hammer as shown.

To Set, tap Taper Pin into base. It does not require being too tight.

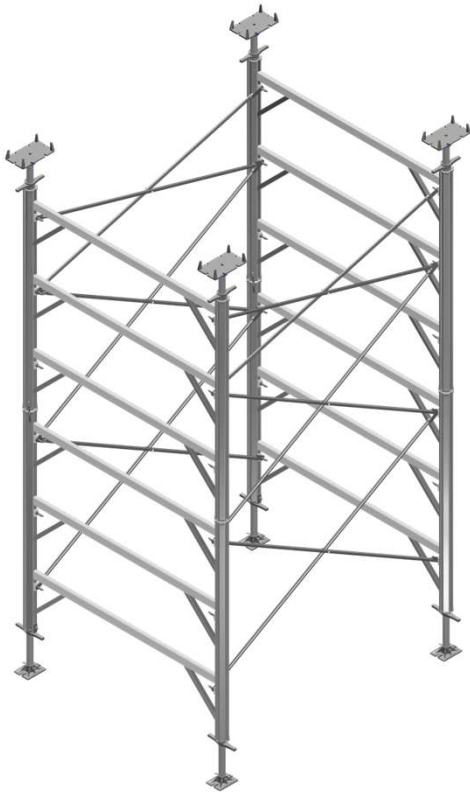


To see more details, visit our website at:
www.hi-lite-systems.com/systems/concrete-shoring/25k-modular-aluminum-shoring-frames/



Contact us for engineering data including maximum loads for strength to weight ratios, load capacities, quality control specifications and other technical data.

H-PRO Aluminum Shoring Frames



Let the **PRO** do it.

The all new HI-LITE "H-PRO" (The Professional Series) is an aluminum shoring frame system designed to maximize capacity while reducing the number of frames required.

Standard width of 6ft (1.8m) and has a capacity of up to 88.96 kN (20,000 lb.) per leg using a safety factor of 2.5.

➤ Available Sizes (hwxw) 4x6, 6x6, 8x6



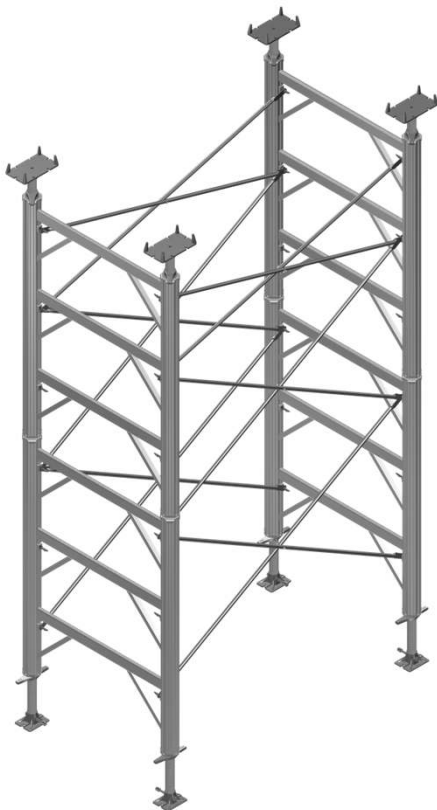
Contact us for engineering data including maximum loads for strength to weight ratios, load capacities, quality control specifications and other technical data.

Let Hi-Lite Take Your Project "To The MAX"

H-MAX Aluminum Shoring Frames

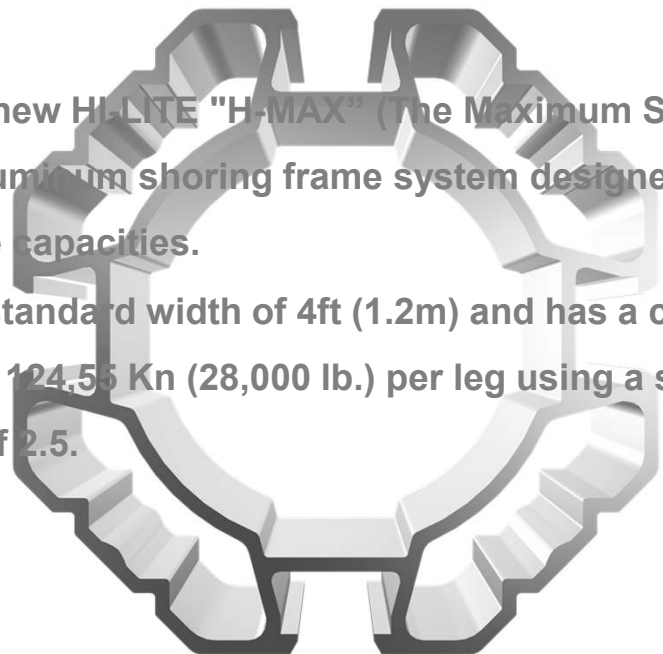


Take it to the **MAX**



The all-new HI-LITE "H-MAX" (The Maximum Series) is a HD aluminum shoring frame system designed for extreme capacities.

With a standard width of 4ft (1.2m) and has a capacity of up to 124,56 Kn (28,000 lb.) per leg using a safety factor of 2.5.



➤ Available Sizes (hwxw) 4x4, 6x4, 8x4



Contact us for engineering data including maximum loads for strength to weight ratios, load capacities, quality control specifications and other technical data.

H-MAX Aluminum Post Shores

Take it to the **MAX**

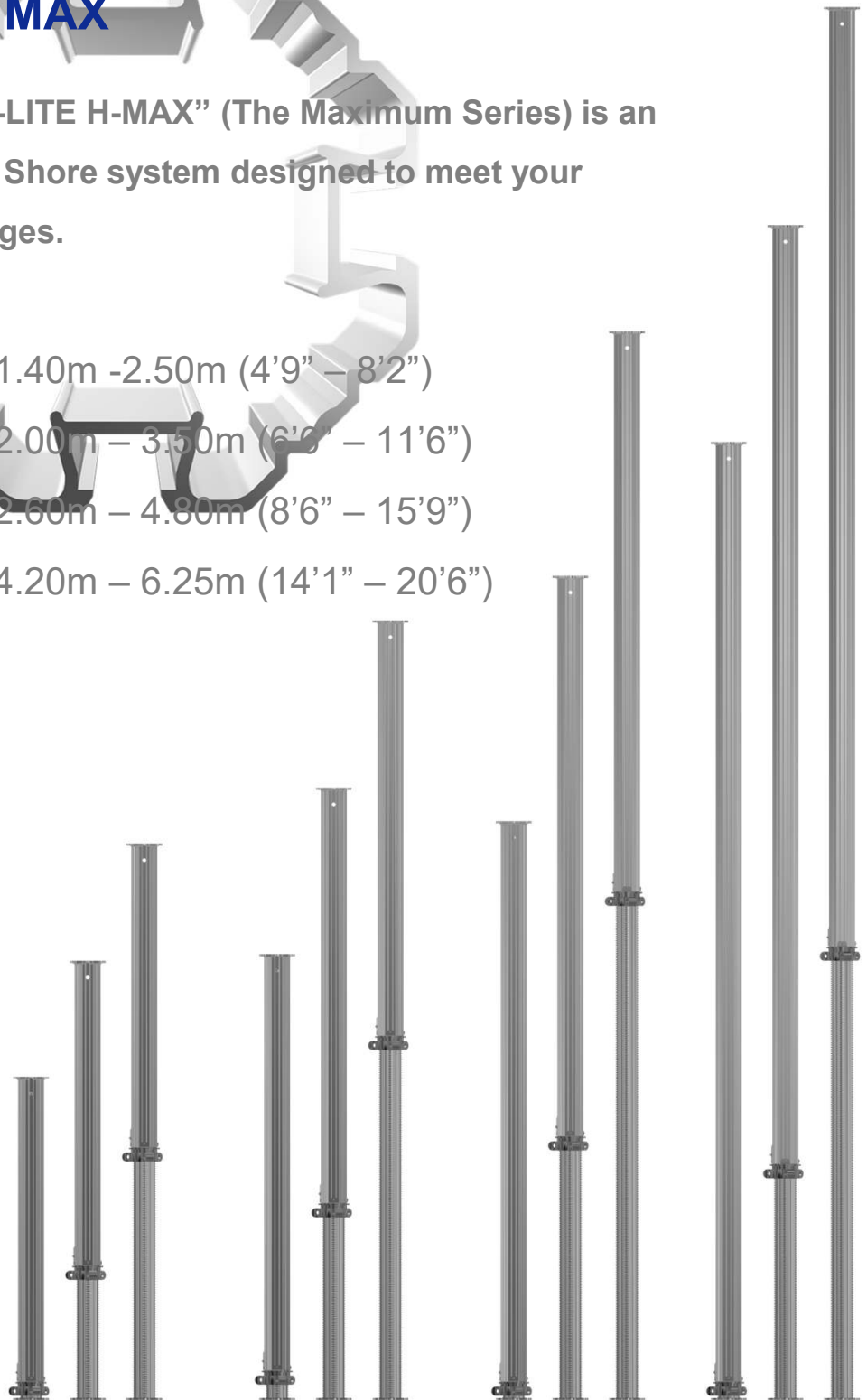
The all new “HI-LITE H-MAX” (The Maximum Series) is an aluminum Post Shore system designed to meet your biggest challenges.

HMAXPS250 1.40m - 2.50m (4'9" - 8'2")

HMAXPS350 2.00m - 3.50m (6'6" - 11'6")

HMAXPS480 2.60m - 4.80m (8'6" - 15'9")

HMAXPS625 4.20m - 6.25m (14'1" - 20'6")



The all-new **HI-LITE H-MAX** (The Maximum Series) is a one-piece aluminum post shore with a captured aluminum screw jack. All HI-LITE products incorporate our signature feature of the continuous T-Bolt slot, allowing for the addition of many accessories such as gates and cross braces to assemble the post shores into towers.

HMAXPS250

Closed: 1.40m = 104.08 kN / 4'9" = 23.4K

Open: 2.50m = 71.7 kN / 8'2" = 16.12K

HMAXPS350

Closed: 2.00m = 96.52kN / 6'6" = 21.8K

Open: 3.50m = 53.95kN / 11'6" = 12.13K

HMAXPS480

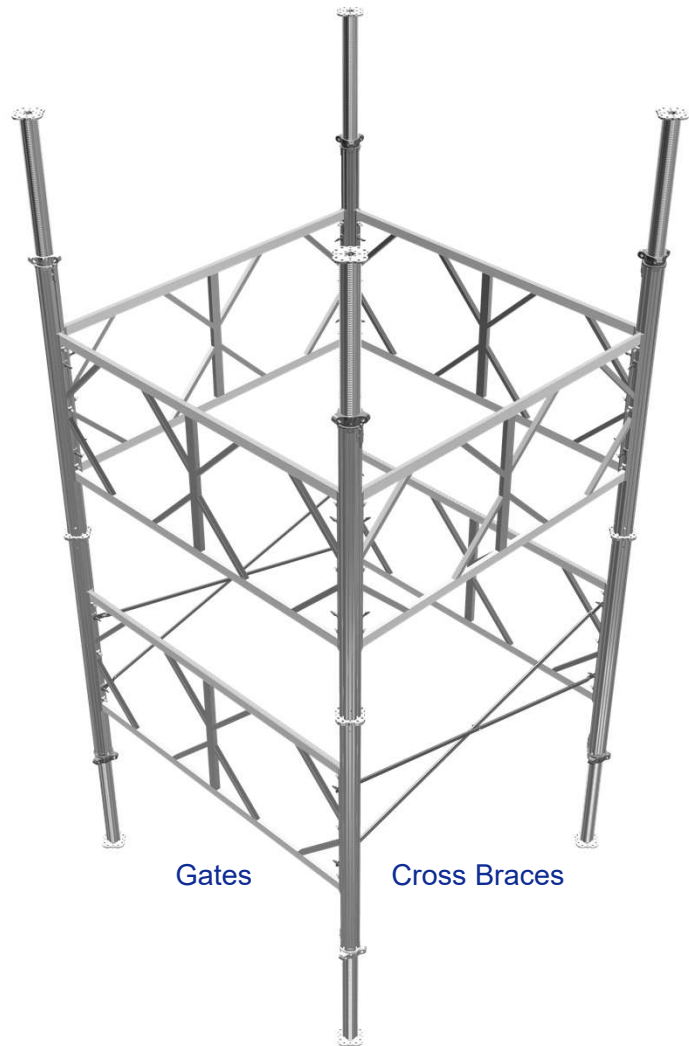
Closed: 2.60m = 91.76kN / 8'6" = 20.63K

Open: 4.80m = 28.78kN / 15'9" = 6.47K

HMAXPS625

Closed: 4.20m = 68.94kN / 14'1" = 15.5K

Open: 6.25m = 36.65kN / 20'6" = 8.24K



Safe Working Load – 3:1 Safety Factor

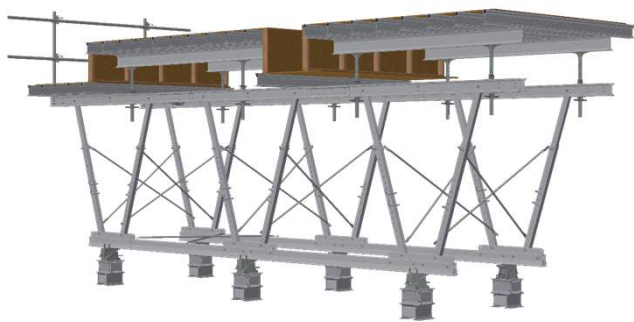
- **Screw Jack:** Captured aluminum screw jack for precise height adjustments
- **Accessories:** Compatible with gates, cross braces, and other tower accessories



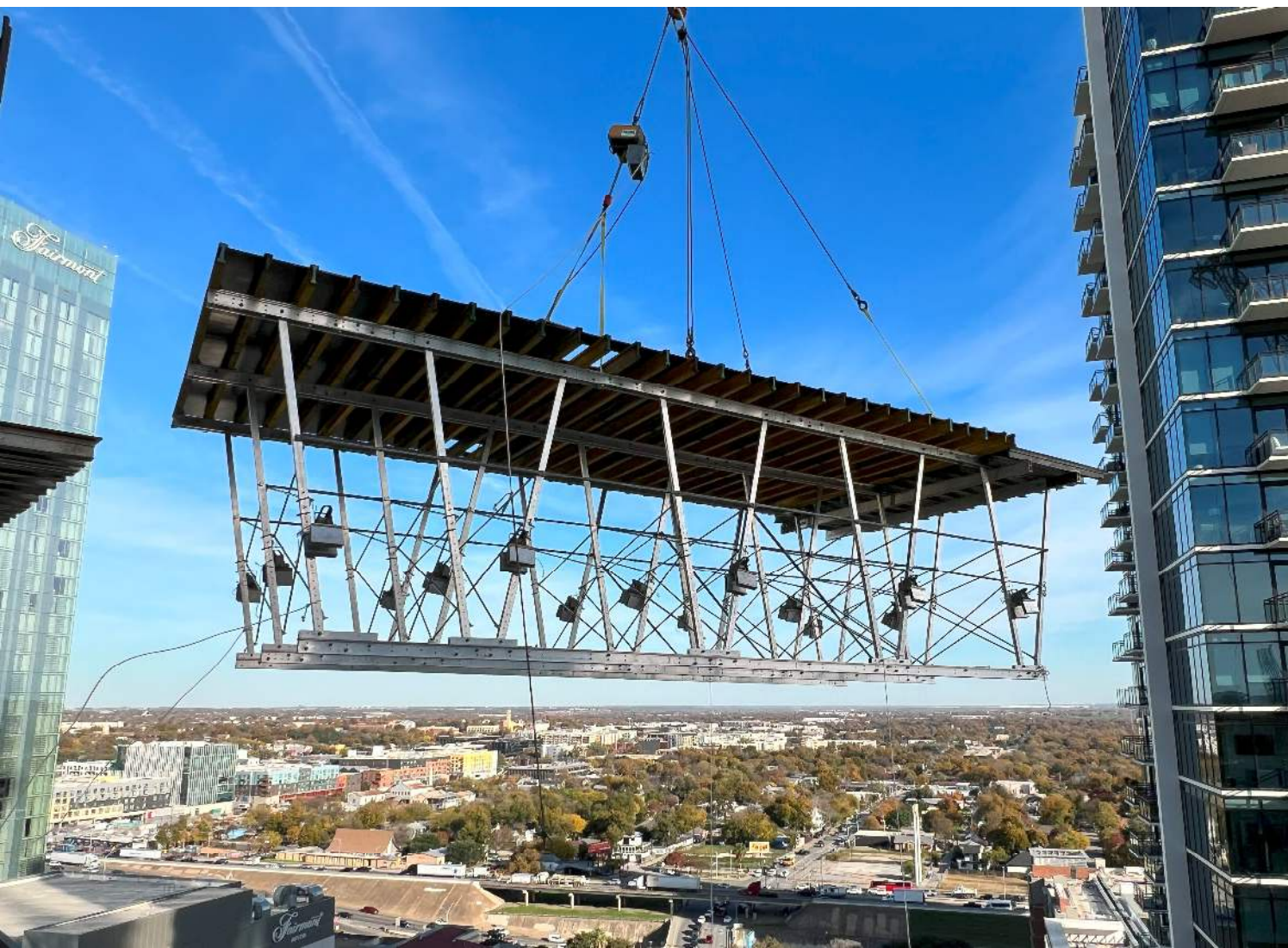
Contact us for engineering data including maximum loads for strength to weight ratios, load capacities, quality control specifications and other technical data.

The Bigger, Higher And More Complex The Project, The More Hi-Lite Excels.

Aluminum Telescopic Fly Forms



- Suited for multiple stories,
- Large bay structures, bridges, overpasses and tunnels.
- Significantly reduces crane time.
- Telescopic - easily adjusts for differing floor heights.
- Lightweight and easy to handle—increased productivity.
- No need for working platforms, chain blocking.



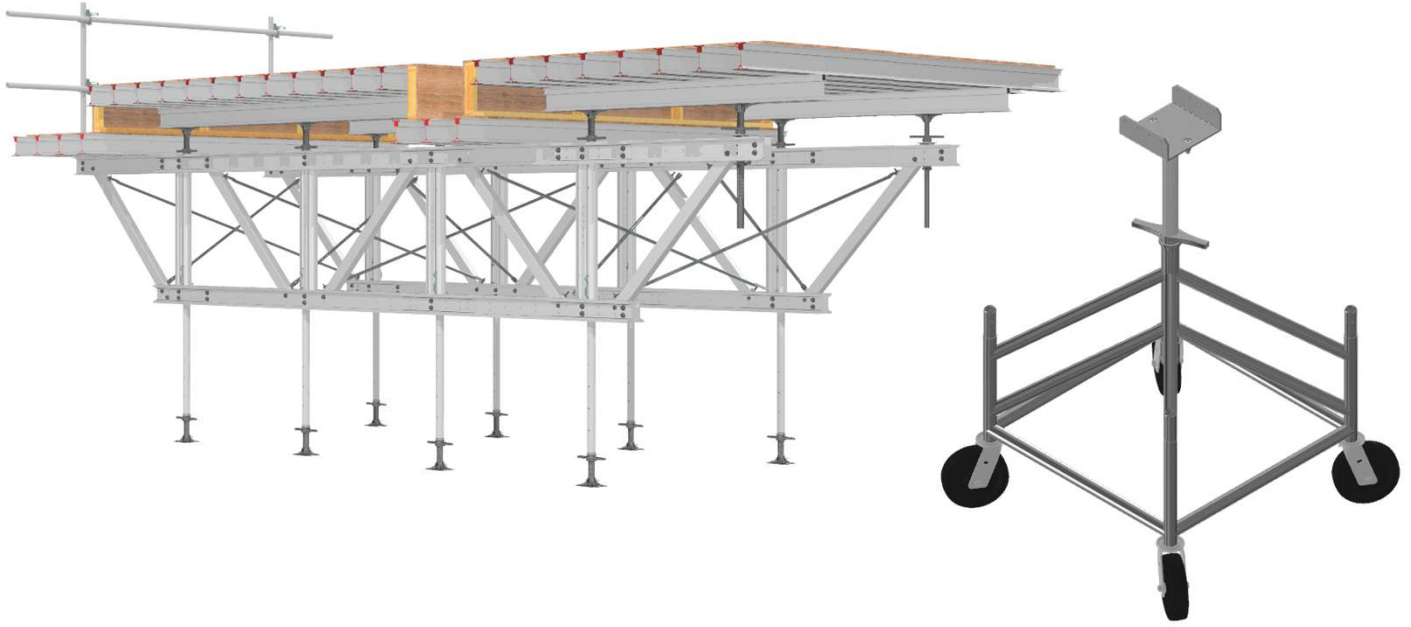
To see more details, visit our website at:
www.hi-lite-systems.com/systems/concrete-shoring/aluminum-fly-forms/



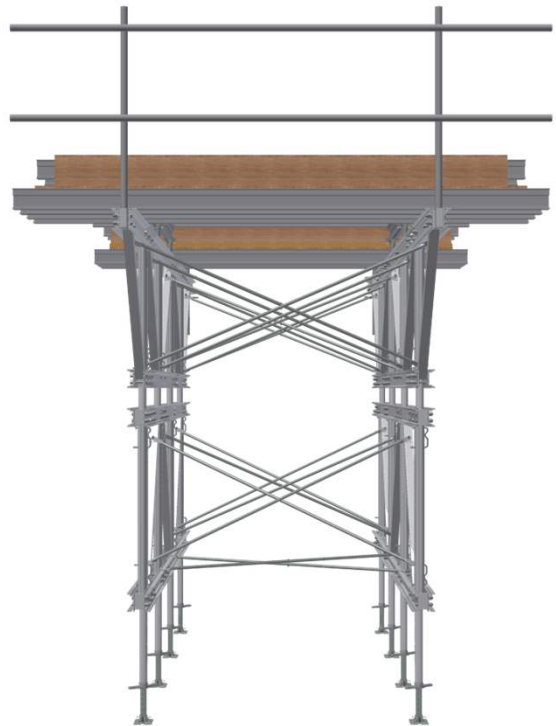
Contact us for engineering data including maximum loads for strength to weight ratios,
load capacities, quality control specifications and other technical data.

When Perimeter, Upturn or Internal Beams, restrict easy flying, go Drop Leg.

Aluminum Drop Leg Fly Forms



- **Reduce crane time.**
- **Drop Legs make it possible to fly over and under internal beams.**
- **Light-weight and easy to handle results in increased productivity.**
- **Moving Equipment makes Stripping, Moving and Positioning quick and safe.**



To see more details, visit our website at:
<https://www.hi-lite-systems.com/systems/drop-leg-fly-form-system/>



Contact us for engineering data including maximum loads for strength to weight ratios,
load capacities, quality control specifications and other technical data.

Same load capacity at half the weight of steel, our Bridge Overhang system reduces installation time – EVERY TIME.

Aluminum Bridge Overhang Brackets

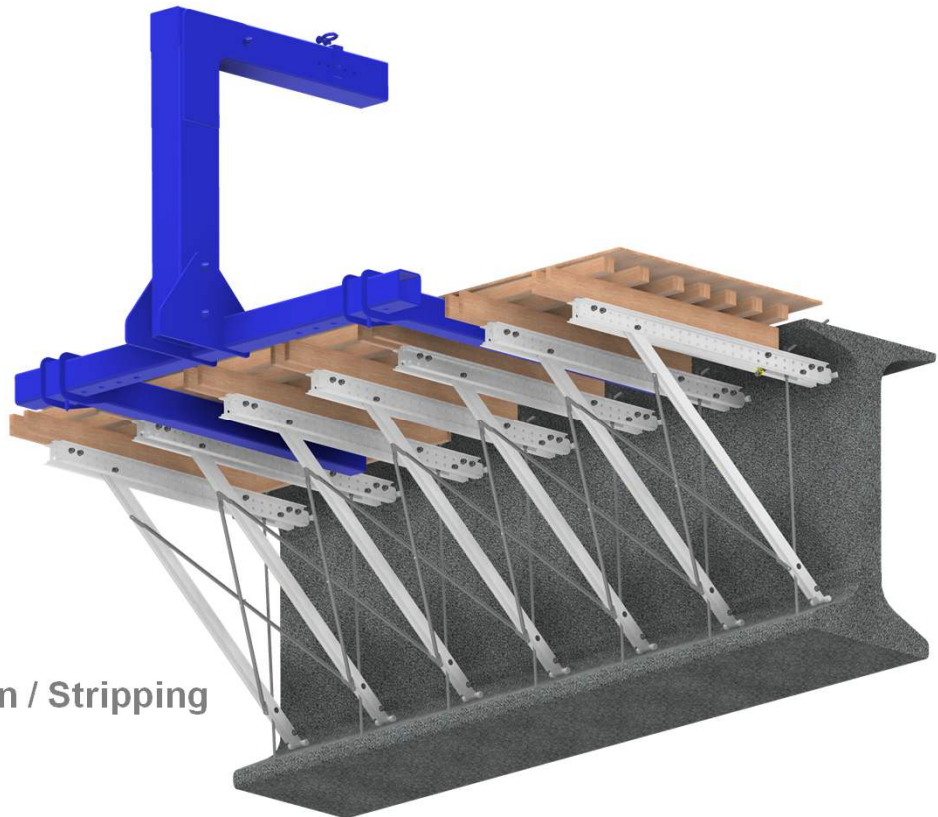
Heavy Duty 53Kn (12,000 lbs.)

Light Duty 26Kn(6,000lbs.)

- Strong and Lightweight
- Safe
- Efficient
- Versatile
- Economical



- Brackets space 2x apart compared to Steel Brackets.
- Less labour for installation and stripping.
- “Top Down” Adjustment Rod.
- A Top Chord Extension can be added to increase length.



- Ganged Installation / Stripping

To see more details, visit our website at:
www.hi-lite-systems.com/systems/concrete-shoring/bridge-overhang-brackets/



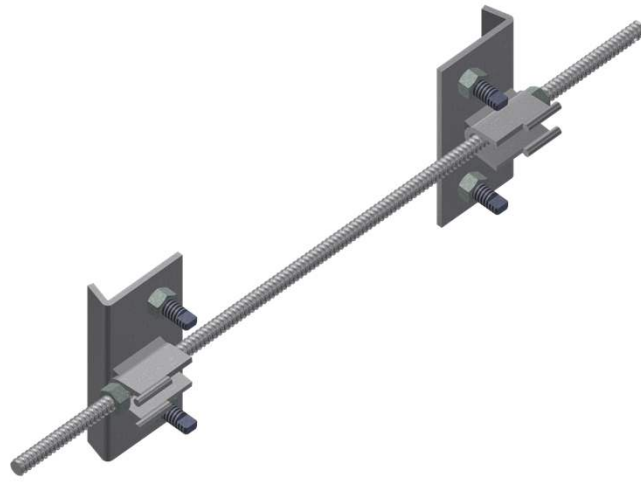
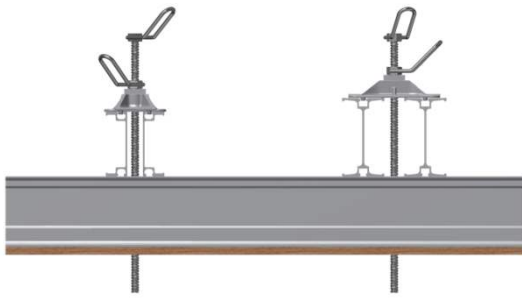
Contact us for engineering data including maximum loads for strength to weight ratios,
load capacities, quality control specifications and other technical data.

**Productivity & Efficient Utilization, Same Beams And Stringers
Are Used Both For Walls And Slabs!**

Aluminum Beam Wall Form System

- Uses the minimum number of components possible.
- Reusable components.
- Assembles and strips easily.
- Can quickly adapt to changes in size during the construction cycle.
- Big size panels with mid capacity cranes
- Better quality of concrete surface requiring less labour to finish.





To see more details, visit our website at:
www.hi-lite-systems.com/systems/formwork/concrete-wall-forms/



Contact us for engineering data including maximum loads for strength to weight ratios,
load capacities, quality control specifications and other technical data.

Hi-Lite's 25K Alum PS are designed for quick and easy handling, require minimal maintenance and can be easily converted to shoring frames.

Aluminum Post Shores



Each post is equipped on all four sides with a full-length vertical T-bolt slot that accepts bolts with three different heads. This feature alone will save you frustration, along with time and money.

Custom sizes of longer 25K aluminum Post Shores available. Please contact us for additional details including sizes, engineering data, maximum loads for strength to weight ratios, load capacities, quality control specifications and other technical data.

HI-LITE 25K ALUMINUM POST SHORE

		MIN	SWL 2.5:1	MAX	SWL 2.5:1	RANGE	WEIGHT
25PS4&3	I	72"	25,500 lbs..	102"	25,500 lbs..	30"	48.1 lbs..
	M	1.83 m	113.4 kN	2.59 m	113.4 kN	0.76 m	21.9 kg
25PS5&3	I	72"	25,808 lbs..	113"	19,337 lbs..	41"	51.3 lbs..
	M	1.83 m	114.8 kN	2.87 m	86.02 kN	1.04 m	23.3 kg
25PS6&4	I	84"	20,053 lbs..	137"	17,761 lbs..	53"	56.9 lbs..
	M	2.13 m	89.2 kN	3.45 m	79 kN	1.32 m	25.9 kg
25PS8&6	I	108"	17,310 lbs..	185"	8,967 lbs..	77"	68.2 lbs..
	M	2.74 m	77 kN	4.70 m	39.89 kN	1.96 m	31.0 kg



To see more details, visit our website at:
www.hi-lite-systems.com/systems/concrete-shoring/aluminum-post-shores/



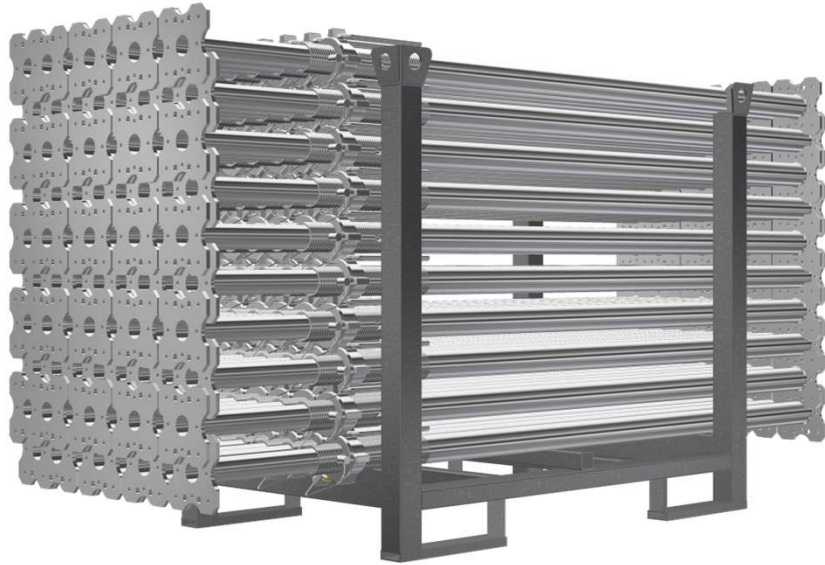
Contact us for engineering data including maximum loads for strength to weight ratios,
 load capacities, quality control specifications and other technical data.

Hi-Lite's Steel Post Shores Are Made Of High-quality Steel Tubes And Accessories Which Are Galvanized To Ensure Many Years Of Repeated Use.

Steel Post Shores

- 150mm x 150mm Base / Top Plate (6in x 6in).
- Heavy Duty Cast Hammer Nut
- Full Length Tube / Thread





Shipping Cradle

HI-LITE GALVANIZED STEEL POST SHORE

		MIN	SWL 3:1	MAX	SWL 3:1	RANGE	WEIGHT
HPS-0	I	48"	13,751 lbs.	72"	11,546 lbs.	24"	29 lbs.
	M	1.2 m	61.17 kN	1.8 m	51.36 kN	0.6 m	13.15 kgs
HPS-1	I	72"	11,546 lbs.	120"	7,209 lbs.	48"	46 lbs.
	M	1.8 m	51.36 kN	3.0 m	32.07 kN	1.2 m	20.85 kgs
HPS-2	I	84"	12,043 lbs.	132"	6,735 lbs.	48"	48 lbs.
	M	2.1 m	53.57 kN	3.3 m	29.96 kN	1.2 m	21.77 kgs
HPS-3	I	108"	7,317 lbs.	156"	3,141 lbs.	48"	54 lbs.
	M	2.7 m	32.55 kN	3.9 m	13.97 kN	1.2 m	24.49 kgs
HPS-4	I	132"	8,419 lbs.	180"	3,165 lbs.	48"	64 lbs.
	M	3.3 m	37.45 kN	4.5 m	14.08 kN	1.2 m	29.04 kgs

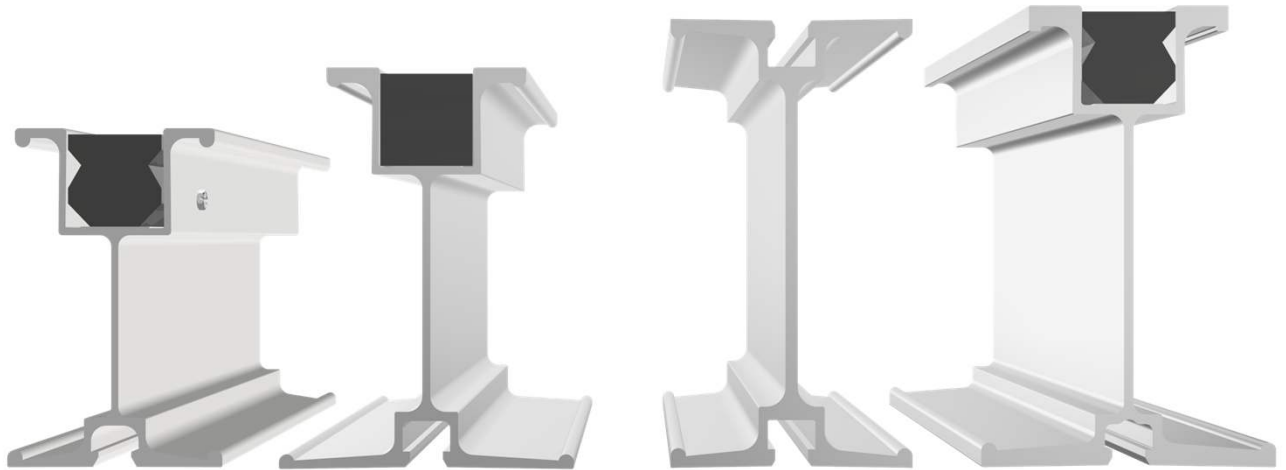
To see more details, visit our website at:
www.hi-lite-systems.com/systems/concrete-shoring/steel-post-shores/



Contact us for engineering data including maximum loads for strength to weight ratios,
 load capacities, quality control specifications and other technical data.

Hi-Lite Aluminum Beams And Stringers In All Your Projects, You Can Reduce Both Labour And Materials Costs – In Significant Amounts.

Aluminum Beams



➤ **More Efficient:**

Bevels on T-bolt slots provide for fast alignment of T-bolt components. Rapid assembly moves the project ahead, overcomes unforeseen delays quickly.

➤ **More Versatile:**

Plastic insert allows for nailing or screwing down plywood decking. Less subject to damage.

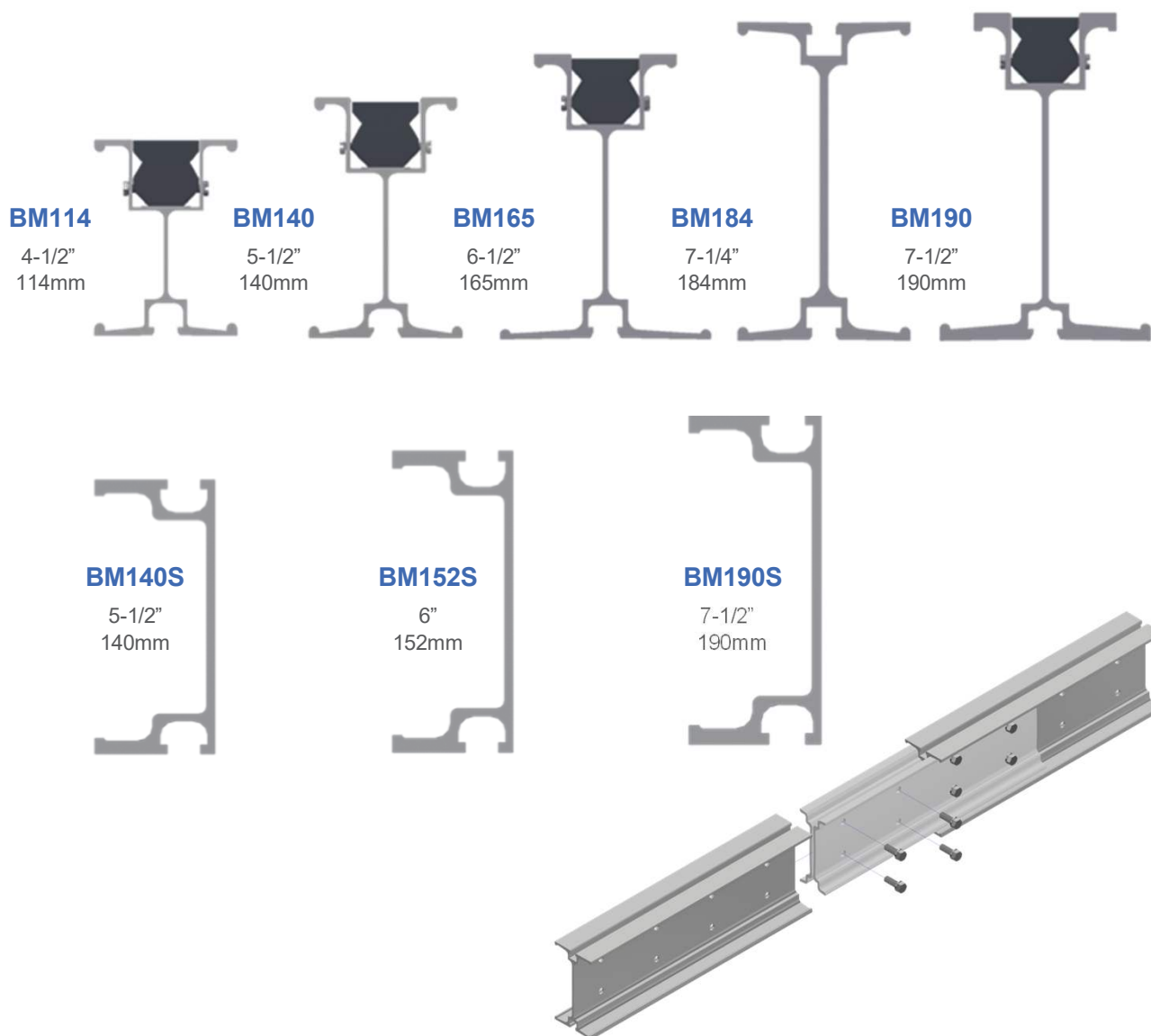
Reusable. It all adds up to less inventory, less storage, lower transportation cost, and lower carrying costs.

➤ **More Economical:**

12 mm (1/2") T-bolt slots provide for easy fastening of beams and stringers to their supports or to each other. Your workers will be more productive and the lower labour costs will be reflected in your bottom line.

Product Highlights

- All beams are available in standard lengths of:
- 8', 9', 10', 10'6", 12', 14', 16', 18', 20', and 21' with plastic inserts.
- All beams can be specially ordered in almost any length, up to 12 meters (39 feet) to suit the inside dimensions of an ocean-going container.
- Splice Plates are available for the BM165 and the BM184



To see more details, visit our website at:
<https://www.hi-lite-systems.com/systems/concrete-shoring/aluminum-beams/>



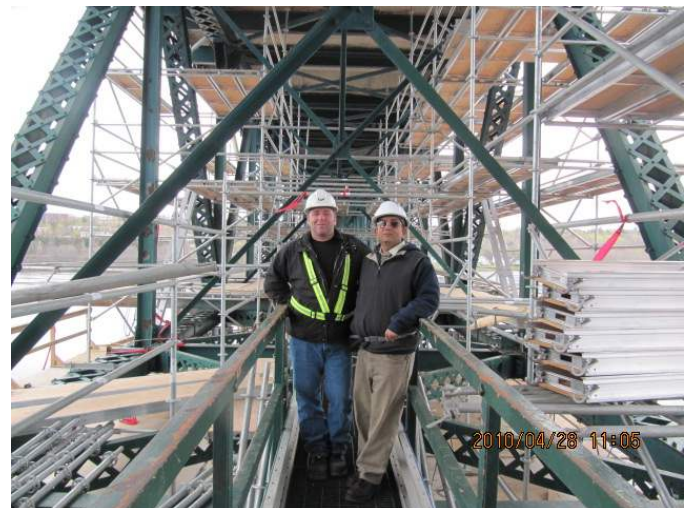
Contact us for engineering data including maximum loads for strength to weight ratios,
 load capacities, quality control specifications and other technical data.

System Scaffolding, Aluminum Decks



HI-LITE also provides a complete System Scaffolding solutions c/w standards, ledgers, ladders, clamps etc. Meeting all the CSA & DOT requirement for bridges.

Hi-Lite 7' and 10' Aluminum Decks (100 PSF and 75 PSF) man and material load as specified by the CSA Code - maintaining a safety factor of 4:1.



Experience the Hi-Lite Advantage.

Call 1-877-HILITE-1 (1-877-445-4831) to request a demonstration of our Hi-Lite Aluminum Systems.

Hi-Lite Systems Ltd.

3456 Mavis Road
Mississauga, Ontario
Canada L5c 1t8

Tel: 1-905-677-4032

Toll-free: 1-877-HILITE-1 [North America] (1-877-445-4831)

Fax: 1-905-677-4542

E-mail: hilite@hi-lite-systems.com

Web Site: www.hi-lite-systems.com



HI-LITE

ALUMINUM SHORING SYSTEMS



SHOR
SCAF

A small icon of a scaffolding structure, positioned to the right of the text 'SHOR SCAF'.